

Commercial Cooler (2-Door)

The Specification

1. Technical Specification
Table of
Commercial
Cooler

Model	ML-0221
Outside Dimension (mm)	1100x620x1930
Inside Dimension (mm)	1025x505x1330
Capacity (CBF/Litre)	24 / 688
Door	2 layers vacuum glass / Low-E
Shelf	5x2 rows
Refrigerant Type	R134a
Defrosting System	No Frost
Temperature	0 to 7°C
Drainage System	Manual / Rejectcycle
Net Weight (Kg)	110
Type of Light	1xT28 Fluorescent
Compressor	1/3 HP
Nominal Power Consumption	386 w / 1.80 amp
Cooling System	Digital Control
Cooling Fan (watt)	9x1
Loading Qty for 20' Container	17
Loading Qty for 40' Container	34

1 - 5.
Overview of
2-Door model
digital / manual drainage



Commercial Cooler (3-Door)

The Specification

1. Technical Specification
Table of
Commercial
Cooler

Model	ML-0321
Outside Dimension (mm)	1800x620x1930
Inside Dimension (mm)	1725x505x1330
Capacity (CBF/Litre)	41 / 1158
Door	2 layers vacuum glass / Low-E
Shelf	5x3 rows
Refrigerant Type	R404/507a
Defrosting System	No Frost
Temperature	0 to 7°C
Drainage System	Manual / Rejectcycle
Net Weight (Kg)	200
Type of Light	2xT28 Fluorescent
Compressor	1/2 HP
Nominal Power Consumption	405 w / 2.45 amp
Cooling System	Digital Control
Cooling Fan (watt)	9x2
Loading Qty for 20' Container	9
Loading Qty for 40' Container	19

1 - 5.
Overview of
3-Door model
digital / manual drainage



Commercial Cooler (4-Door)

The Specification

1. Technical Specification
Table of
Commercial
Cooler

Model	ML-0421
Outside Dimension (mm)	1100x620x1930
Inside Dimension (mm)	1025x505x925
Capacity (CBF/Litre)	17 / 478
Door	2 layers vacuum glass / Low-E
Shelf	3x2 rows
Refrigerant Type	R404/507a
Defrosting System	No Frost
Temperature	0 to 7°C (upper) / 0 to -7°C (lower)
Drainage System	Manual / Rejectcycle
Net Weight (Kg)	190
Type of Light	1xT20 Fluorescent
Compressor	1/2 HP
Nominal Power Consumption	405 w / 2.45 amp
Cooling System	Digital Control
Cooling Fan (watt)	9x1
Loading Qty for 20' Container	17
Loading Qty for 40' Container	34

1 - 5.
Overview of
4-Door model
digital / manual drainage



4-6

7



Supermarket Freezer (SMK-970)

The Specification

1. Technical Specification
Table of
Supermarket Freezer
(SMK-970)

Model		SMK 970
Storage Capacity	litres	970
Display Area	sq.m.	1.80
Ambient Temperature Range	°C	+16 to +25
Adjustable Inside Temperature Range	°C	-18 to -23
Nominal Power Consumption	watt/amp	520/3
Electric Consumption	kwh/24hr	11.5
Outer & Inner Tank Coating		Powder Coating
Outer & Inner Tank Material		Galvanized Steel
Insulation Thickness	mm.	70
Glass Lid Thickness	mm.	4
Electrical Data		
Defrosting System (standard)		Automatic/Hotgas
Defrost Optimization for Energy Saving (standard)		Yes
Night Mode Optimization for Energy Saving (option)		Yes
Holiday Mode Optimization for Energy Saving (option)		Yes
Temperature Monitor & Control System (option)		Yes
Refrigerant Data		
Refrigerant Type		R507
Refrigerant Quantity	gram	300
Compressors	hp/watt	3/4 /529
Maximum Operating Pressure	bar	26
Dimension		
Length Outside/Inside	mm.	2150/2010
Depth Outside/Inside	mm.	1000/870
Front Access Height/Rear Height	mm.	800/910
Front/Back Inside Height	mm.	685/785
Load Line Limit Height	mm.	600
Net Weight (excl. packing)	kg.	155
Loading Qty for 20' Container	units	10
Loading Qty for 40' Container	units	22

1-3. Supermarket Freezer
SMK 970
(sliding curve glass lid)



1

2

3



Stock Freezer (L-1200)

The Specification

1. Technical Specification
Table of
Stock Freezer
(L-1200)

Model		L-1200
Storage Capacity	litres	1200
Display Area	sq.m.	-
Ambient Temperature Range	°C	+16 to +32
Adjustable Inside Temperature Range	°C	-18 to -25
Nominal Power Consumption	watt/amp	520/3
Electric Consumption	kwh/24hr	11.5
Outer & Inner Tank Coating		Powder Coating
Outer & Inner Tank Material		Galvanized Steel
Insulation Thickness	mm.	70
Glass Lid Thickness	mm.	-
Electrical Data		
Defrosting System (standard)		Automatic/Hotgas
Defrost Optimization for Energy Saving (standard)		Yes
Night Mode Optimization for Energy Saving (option)		No
Holiday Mode Optimization for Energy Saving (option)		No
Temperature Monitor & Control System (option)		No
Refrigerant Data		
Refrigerant Type		R507
Refrigerant Quantity	gram	380
Compressors	hp/watt	3/4 /529
Maximum Operating Pressure	bar	26
Dimension		
Length Outside/Inside	mm.	2150 / 2010
Depth Outside/Inside	mm.	1000 / 870
Front Access Height/Rear Height	mm.	910 / 910
Front/Back Inside Height	mm.	785 / 785
Load Line Limit Height	mm.	700
Net Weight (excl. packing)	kg.	160
Loading Qty for 20' Container	units	10
Loading Qty for 40' Container	units	22

1-2. Stock Freezer
L-1200
(solid lid)



1



2



Stock Freezer (L-700)

The Specification

1. Technical Specification
Table of
Stock Freezer
(L-700)

Model		L-700
Net Capacity	litres	675
Ambient Temperature Range	°C	+16 to +32
Adjustable Inside Temperature Range	°C	-18 to -25
Outer & Inner Tank Coating		Powder Coating
Outer & Inner Tank Material		Galvanized Steel 0.50 mm thick
Insulation Thickness	mm.	60
Casters		4 Double Casters, no lockable

Electrical Data		
Nominal Power Consumption	watt/amp	275/1.35
Electric Consumption	kwh/24hr	6.6
Indicator Lamp		1 x Green Color at front side
Compressor Model		Hitachi RL4588SZ

Refrigerant Data		
Refrigerant Type		R507
Refrigerant Quantity	gram	300
Compressors	hp/watt	1/2 /450
Maximum Operating Pressure	bar	24

Dimension		
External Dimension (WxDxH) (not include casters)	mm.	1895x650x925
Internal Dimension (WxDxH)	mm.	1770x526x814
Load Line Limit Height	mm.	750
Net Weight (excl. packing)	kg.	110
Loading Qty for 20' Container	units	18
Loading Qty for 40' Container	units	36

1-4. Stock Freezer
L-700
(solid lid)



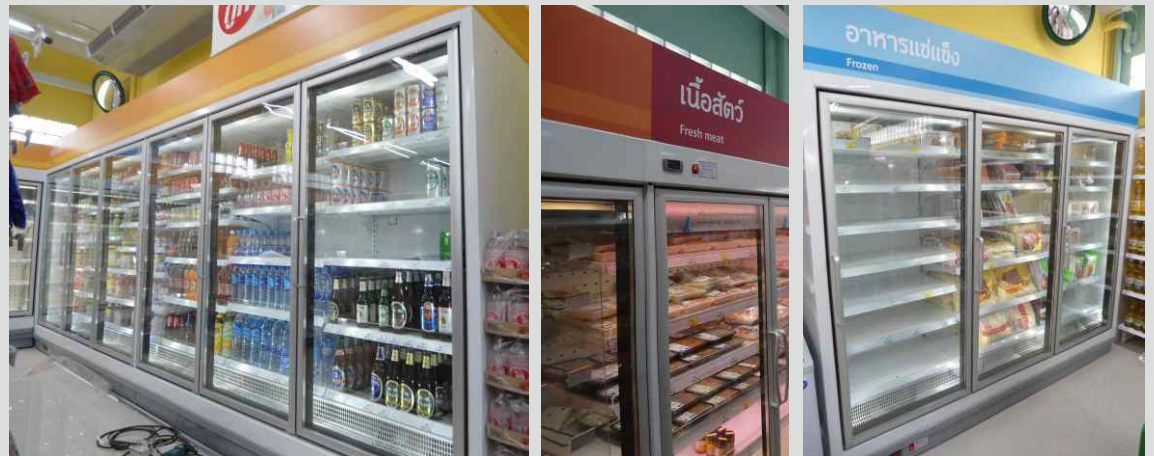
Hinged Glass Door Multi-Deck Showcase

■ □ ■ The Specification

- 1. Technical Specification
- Table of Glass Door Showcase
- 3-Door Model
- 4-Door Model
- 6-Door Model

Model	3-Door	4-Door	6-Door
Refrigerant	R-404		
Requ. Ref. Capacity	1600	960	2600
Operating Temp.	-23° to -25°C	0° to -2°C	2° to 4° C
Evaporated Temp.	-35°C	-10°C	
Amb. Condition	25°C 60% / 27°C 70%		
Wattage & Amperage	3Ph, 380v/1Ph, 220v/1Ph, 100v		
Defrost Heater	1944Wx1		4354Wx1
Frame Heater	41Wx2		336Wx1
Door Heater			
Fan Motors	Elco RPM1300/mn		
Fan Blade	Elco dia 230 mm.		
Canopy Lighting	-	LED 27Wx 2sets	-
Shelf Lighting	-	LED 10W/shelf	-
Controller	Dixell		
Lighting on Door Frame	25W at center, 16W at side frame		
Thermo Sensor	-		
Pipe Connection	Liquid 3/8", suction 3/4"		
Expansion Valve	Emerson EXV model EX2-100s		
Dimension (HxDxL) mm.	1900x720x2440	1900x720x2580	1900x720x4760
Insulation	Foamed-in-place urethane		
Shelf Dimension	1235x375		
Weight (kg)	458	458	830
Evaporator	Fan type Forced Circulation		
Drain Connection	40mm		
Note: all models are remote types			

- 1. Glass Door Showcase 6-Door model
- 2. Glass Door Showcase 4-Door model
- 3. Glass Door Showcase 3-Door model



Multi-Deck Open Showcase

■ □ ■ The Specification

1. Technical Specification
Table of
Multi-Deck Showcase
Open Type

Model	Open Type
Refrigerant	R-404
Requ. Ref. Capacity	960
Operating Temp.	0° to 2°C
Evaporated Temp.	-10°C
Amb. Condition	25°C 60% / 27°C 70%
Wattage & Amperage	3Ph, 380v/1Ph, 220v/1Ph, 100v
Defrost Heater	-
Frame Heater	-
Door Heater	-
Fan Motors	Elco RPM1300/mn
Fan Blade	Elco dia 230 mm.
Canopy Lighting	-
Shelf Lighting	-
Controller	Dixell
Lighting on Door Frame	-
Thermo Sensor	-
Pipe Connection	Liquid 3/8", suction 3/4"
Expansion Valve	Emerson EXV model EX2-100s
Dimension (HxDxL) mm.	1900x720x2580
Insulation	Foamed-in-place urethane
Shelf Dimension	1243x385
Weight (kg)	458
Evaporator	Fan type Forced Circulation
Drain Connection	40mm
Note: all models are remote types	

1-2. Multi-Deck Showcase
Open Type



1



2



Glass Door Upright Freezer (GUF-450)

The Specification

1.
Specification Table of
Glass Door Upright
Freezer
(GUF-450)

Model		GUF-450
Storage Capacity	Litres	450
Display Area	m ²	0.80
Ambient Temperature Range	°C	20 to 25
Range of Adjustable Inside Temperature	°C	-20 to -25
Absorbed Power	watt / amp	520 / 3
Electric Consumption	kwh / 24 hr	11.50
Outer & Inner Tank Coating		Powder Coating
Outer & Inner Tank Material		Galvanized Steel
Insulation Thickness	mm	65
Triple Glazed		Tempered Heated + 2 Clear Float
No. of Shelves	Shelve	5

Electrical Data

Defrosting System (Standard)		Automatic
Defrost Optimization Mode (Standard)		Yes
Night Mode Operation for Energy Saving (optional)		Yes
Holiday Mode Operation for Energy Saving (optional)		Yes
Temperature Monitor & Control System (optional)		Yes

Refrigeration Data

Refrigerant Type		R507
Compressors	HP / Watt	3/4 / 529
Maximum Operating Pressure	bar	22

Dimension

External Dimension (W x D x H)	mm	660 x 835 x 2068
Internal Dimension (W x D x H)	mm	536 x 640 x 1485
Net Weight (excl. packing)	kg	142
Loading Qty for 20' Container	units	18
Loading Qty for 40' Container	units	39

1 - 2.
Glass Door
Upright Freezer
at ThaiFEX 2011
Exhibition



Panel Upright Freezer (PUF-425)

■ □ ■ The Specification

1.
Specification Table of
Panel Upright Freezer
(PUF-425)

Model	PUF-425	
Storage Capacity	Litres	425
Display Area	m ²	-
Ambient Temperature Range	°C	20 to 30
Range of Adjustable Inside Temperature	°C	-25 to -30
Absorbed Power	watt / amp	714 / 4.2
Electric Consumption	kwh / 24 hr	19
Outer & Inner Tank Coating		Powder Coating
Outer & Inner Tank Material		Galvanized Steel
Insulation Thickness	mm	65
No. of Shelves	Shelve	5

Electrical Data

Defrosting System (Standard)	Automatic
Defrost Optimization Mode (Standard)	Yes
Night Mode Operation for Energy Saving (optional)	Yes
Holiday Mode Operation for Energy Saving (optional)	Yes
Temperature Monitor & Control System (optional)	Yes

Refrigeration Data

Refrigerant Type	R507
Compressors	HP / Watt
Maximum Operating Pressure	bar

Dimension

External Dimension (W x D x H)	mm	625 x 860 x 1920
Internal Dimension (W x D x H)	mm	505 x 725 x 1375
Net Weight (excl. packing)	kg	145
Loading Qty for 20' Container	units	18
Loading Qty for 40' Container	units	39

1 - 4.
Panel Upright Freezer
(PUF-425)



Eutectic Plate Freezer System

■ □ ■ The Specification

The Innovation of Frozen Storage System

The most efficient way for fast “freezing” your product with superb features.

Reliability guaranteed

- Digital temperature control
- Rubber seal for low temperature at -40 C
- Easy to use and operation
- Easy to reopen with vacuum release button
- Patented parallel run Evaporator circuit
- Pre-painted steel body for long operation
- Rugged design for reliable operation
- Food grade non-toxic chemical

1.
Specification Table of
Eutectic Plate Freezer

Model		PF-22	PF-20	PF-10
Net Capacity	Litre	350	320	190
Freezer Capacity	Watt	2280	1720	760
Range of Inside Temperature	Celsius	-30 to -40		
Outside Dimension (WxDxH)	mm	641x875x2065	641x875x1907	632x875x1407
Weight	kg.	245	230	155
Outside Package Date (WxDxH)	mm	720x980x2120	700x920x2000	700x920x1500
Shelf Information				
No. of Shelves	shelve	22	20	10
Space between shelves	mm	52	56	73
Eutectic Tray Dimension (WxDxH)	mm	492x652	650x475	
No. of 0.5 kg. Ice Pack/Shelf	packs	19	19	16
No. of 2.2 kg. Ice Pack/Shelf	packs	4+3 (0.5 kg)	4+3 (0.5 kg)	4
No. of 5.0 kg. Ice Pack/Shelf	packs	2+3 (0.5 kg)	2+3 (0.5 kg)	2
Max. Thickness of Product	mm	40		
Electrical Data				
Nominal Voltage/Frequency	V/Hz	220v/50Hz		
Connecting Power	watt	1,628	1,428	714
Input Current	Amp	10/7.4	8.4/6.4	4.2/3.4
Power Consumption	kw-hr/24hr	41.7	32.1	19.7
Refrigerant Data				
Refrigerant		R404a/507		
Maximum Operating Pressure	bar	26		

1. PF-22 model
2. PF-20 model
3. PF-10 model



Eutectic Plate Freezer System

The Specification

Cool Cell

Spacy cooler for storing products that maintain quality for hours to the consumers.

- Efficiency insulation
- Better rubber seal for small and big lids
- Long lasting by well selected materials
- Appropriate weight for easy working
- More than 5 times earning than static cabinet

Model		CC-170	CC-120	CC-45
External size (include lids)	mm	650x1006x663	680x680x538	441x650x530
Internal size (exclude grill icepack)	mm	416x762x454	442x442x359	263x458x379
Weight	kg			
Volume (Gross / Net)	litre	200 / 140	114 / 85	72 / 66
No. of Ice Pack	kg	(5.0x7)+(0.5x6)	(5.0x4)+(0.5x4)	2.2x6
Unit per PF-20	pcs	5	9	13
Vehicle Type		Motorcycle +Sidecar	Tri-shaw	Motorcycle

Ice Packs

- A worthy alternative that is environmental safe, aging tolerance and save more in a long term
- Plastic pack containing chemical and brine solution
- Available sizes are 0.50 kg, 2.20 kg and 5.00 kg.

Ice Pack -5 C for chilled products, vegetable, fruits, beverage and beer

Ice Pack -26 C for frozen food and ice cream

1. Cool Cell CC-170
2. Cool Cell CC-120
3. Cool Cell CC-45
4. Ice Pack 0.50 kg
5. Ice Pack 2.20 kg
6. Ice Pack 5.00 kg



QBIC Van / QBIC Cool

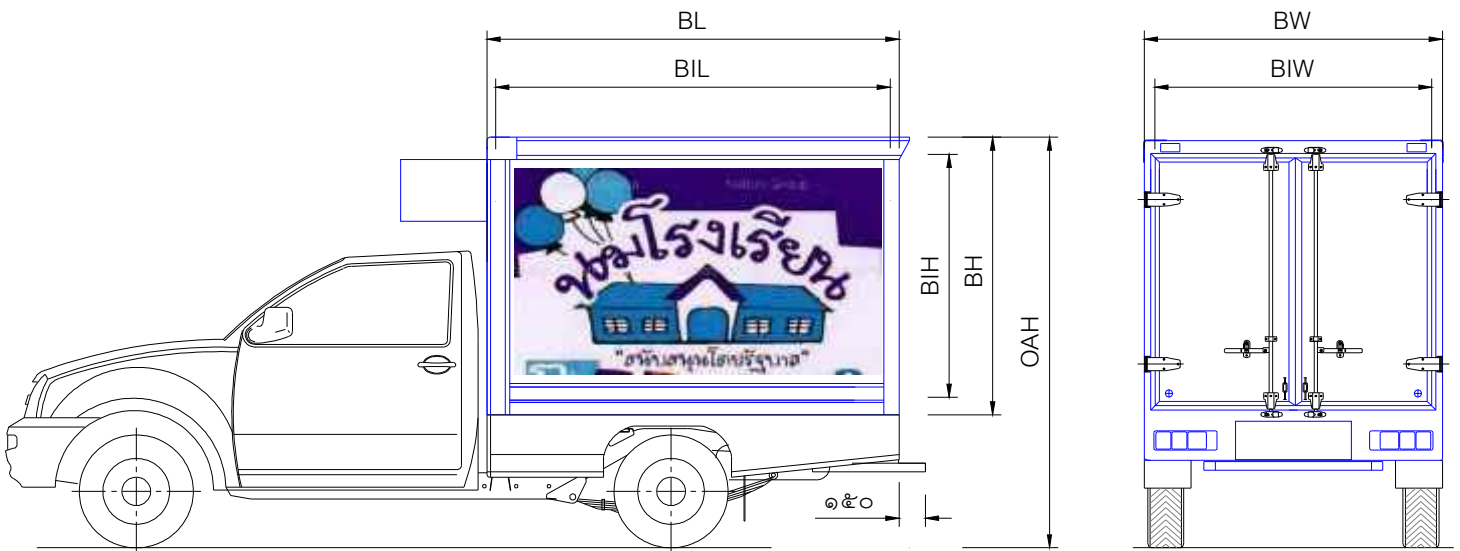
The Specification

1. Specification Table of QBIC Van / QBIC Cool

รุ่นตู้	ขนาดตู้ (ภายนอก) มม.				ขนาดตู้ (ภายใน) มม.		
	BL	BW	BH	OAH	BIL	BIW	BIH
รุ่นมาตรฐาน QBS	2,350	1,800	1,350	2,100	2,300	1,740	1,230
รุ่นตู้สูง QBH	2,350	1,800	1,600	2,380	2,300	1,740	1,480
รุ่นตู้สูงพิเศษ QBSH	2,350	1,800	1,950	2,380	2,300	1,740	1,830

	ตู้บรรทุก ชนิดห้องตู้เย็น	อุณหภูมิตู้ (°C)	ฉนวนภายใน
	ผนังไฟเบอร์กลาส + ไฟเบอร์กลาส	0 ถึง - 5 C	PU หนา 50 มม.
QBIC COOL	ผนังอลูมิเนียม + ผนังอลูมิเนียม	-10° ถึง -15° C	PU หนา 75 มม.
	ผนังไฟเบอร์กลาส + ผนังสแตนเลส	-20° ถึง -25° C	PU หนา 100 มม.

	ตู้บรรทุก ชนิดห้องตู้แห้ง	ฉนวนภายใน
QBIC VAN	ผนังไฟเบอร์กลาส + ไฟเบอร์กลาส	PS หนา 25 มม.
	ผนังอลูมิเนียม + ผนังอลูมิเนียม	PS หนา 25 มม.



1-2. QBIC Cool



1

2

